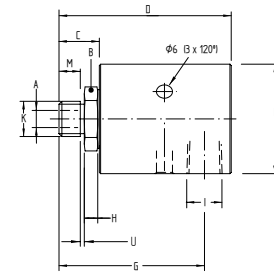
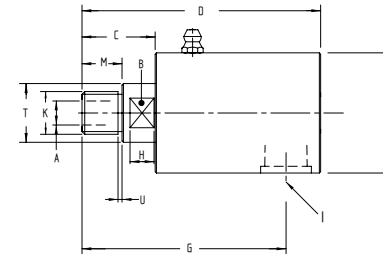


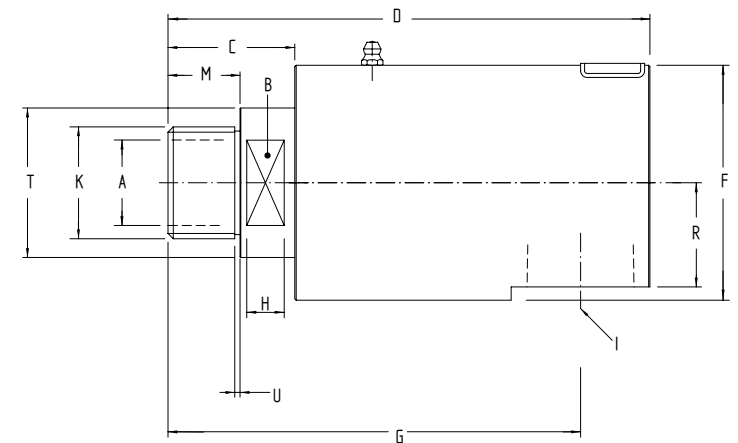
MODELO	REF.	ROSCA ROTOR	ΦA	B	C	D	ΦF	G	H	I	K	M	R	T	U	PESO
JA-3		1/4" BSP D 1/4" BSP I	3,4	Hex 24	15,1	64,5	41	54,5	5	1/4" BSP	1/4" BSP	9,5	-	-	1,5	✓
JA-6		1/4" BSP D 1/4" BSP I	6,4	Hex 24	15,1	64,5	41	54,5	5	1/4" BSP	1/4" BSP	9,5	-	-	1,5	✓
JA-9		3/8" BSP D 3/8" BSP I	9	19 e.c.	27,4	89,4	45	76,4	9	3/8"VBSP	3/8" BSP	15	-	Φ22	1,5	✓
		M16 x 2 D M16 x 2 I	9	19 e.c.	27,4	89,4	45	76,4	9	3/8" BSP	M16 x 2	15	-	Φ22	1,5	✓
		3/8" NPT D 3/8" NPT I	9	19 e.c.	25,4	87,4	45	74,4	9	3/8" BSP	3/8" NPT	13	-	Φ22	1,5	✓
JA-12		1/2" BSP D 1/2" BSP I	12	24 e.c.	34,5	112,5	58	96,5	11	1/2" BSP	1/2" BSP	19	-	Φ30	3	✓
		1/2" NPT D 1/2" NPT I	12	24 e.c.	34,5	112,5	58	96,5	11	1/2" BSP	1/2" NPT	19	-	Φ30	3	✓
JA-19		3/4" BSP D 3/4" BSP I	18	32 e.c.	37	132,5	69	114,5	11	3/4" BSP	3/4" BSP	22	-	Φ36	3	✓
		3/4" NPT D 3/4" NPT I	18	32 e.c.	37	132,5	69	114,5	11	3/4" BSP	3/4" NPT	22	-	Φ36	--	✓
JA-25		1" BSP D 1" BSP I	24	40 e.c.	39,5	154,5	84	131,5	11	1" BSP	1" BSP	22	-	Φ48	3	✓
		1" NPT D 1" NPT I	24	40 e.c.	39,5	154,5	84	131,5	11	1" BSP	1" NPT	22	-	Φ48	--	✓
JA-32		1-1/4" BSP D 1-1/4" BSP I	32	46 e.c.	47,5	180,5	90	154,5	14	1-1/4" BSP	1-1/4" BSP	27	-	Φ56	2	✓
		1-1/4" NPT D 1-1/4" NPT I	32	46 e.c.	44,5	177,5	90	151,5	14	1-1/4" BSP	1-1/4" NPT	24	-	Φ56	--	✓
JA-38		1-1/2" BSP D 1-1/2" BSP I	38	55 e.c.	60	203	106	173	25	1-1/2" BSP	1-1/2" BSP	28	-	Φ64	2	✓
		1-1/2" NPT D 1-1/2" NPT I	38	55 e.c.	54	197	106	167	25	1-1/2" BSP	1-1/2" NPT	22	-	Φ64	--	✓
JA-50		2" BSP D 2" BSP I	50	60 e.c.	68	244	116	203	25	2" BSP	2" BSP	38	-	Φ74	4	✓
		2" NPT D 2" NPT I	50	60 e.c.	68	244	116	203	25	2" BSP	2" NPT	38	-	Φ74	--	✓



ESTE PLANO ES EL GENERICO PARA LA JA-3 Y JA-6



ESTE PLANO ES EL GENERICO PARA LA JA-9 - 12 - 19 y 25



ESTE PLANO ES EL GENERICO PARA LA JA-32 - 38 y 50